

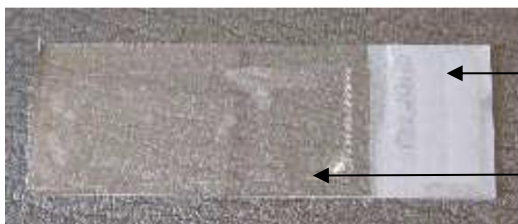


Provtagning för springmask - tejptest

Sampling instructions for thread worm

Patient instruktioner

1. Using a pencil, write the personal identification number (personnummer), name and sampling date on the white part of the glass slide received from the laboratory.
2. Take the sample in the morning before washing and toilet visits. Press a piece of transparent tape with the sticky side against the skin in several places around the rectum opening.
3. Apply the tape firmly to the slide with the sticky side to the glass.



Write with pencil here.

Press the tape firmly against the glass to avoid folds or large bubbles.

4. Place the glass slide in the case you received from the laboratory.
5. Label the case with personal identification number (personnummer) and the sampling date.
6. The test should be taken on a weekday so that it can be returned to the healthcare (vårdcentral/mottagning) at the same day.